

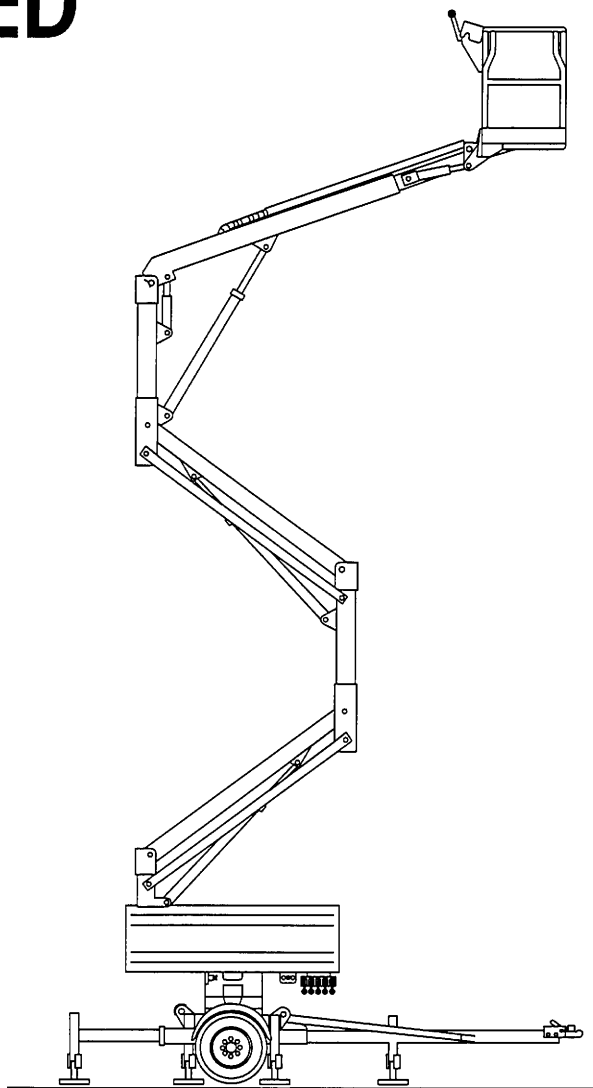
**RZB 50**  
**RZB 55**

 **TEREX AERIALS**  
Milwaukee, Wisconsin

# **ILLUSTRATED PARTS CATALOG**

**FOR MACHINE  
SERIAL NUMBER**

---



**Part No. 89-472005 • Revision A.3 dated Sep., 1994 •**

# TABLE OF CONTENTS

## INTRODUCTION

## PRIMARY MACHINE COMPONENT GROUPS

### SECTION 1: UNDERCARRIAGE

01.07: TRAILER ASSEMBLY

### SECTION 2: SUPERSTRUCTURE

02.07: SUPERSTRUCTURE ASSEMBLY (ELECTRIC)

02.18: SUPERSTRUCTURE ASSEMBLY (FUEL OPERATED)

### SECTION 3: BOOM

03.04: BOOM ASSEMBLY

### SECTION 4: PLATFORM

04.04: PLATFORM ASSEMBLY (ELECTRIC)

04.14: PLATFORM ASSEMBLY (FUEL OPERATED)

### SECTION 6: VALVE BANK

06.06: GROUND/ PLATFORM VALVE BANK ASSEMBLY

### SECTION 7: GROUND CONTROL BOX

07.16: GROUND CONTROL BOX

### SECTION 8: ENGINE ASSEMBLY

08.12: ENGINE ASSEMBLY, BRIGGS 4041 GAS/ DUAL FUEL

08.22: ENGINE ASSEMBLY, HONDA GX 340 Q GAS

### SECTION 12: PUMPS

12.03: EMERGENCY PUMP

### SECTION 14: TOWING EQUIPMENT

14.01: TRAILER COUPLING [6,000 LB. (2,722 KG.)]

14.03: TRAILER JACK

14.06: TRAILER COUPLING [7,500 LB. (3,402 KG.)]

### SECTION 16: ELECTRICAL SWIVEL

16.01: ELECTRICAL SWIVEL

### SECTION 99: DECALS

99.07: DECALS

## INTRODUCTION

This Illustrated Parts Catalog is designed to help you identify and order the correct replacement parts for use on SIMON RZB 50/ 55 TRAILER MOUNTED AERIAL WORK PLATFORMS. All parts represented here are manufactured and supplied in accordance with Simon Aerials quality standards. We recommend that you use GENUINE SIMON AERIALS PARTS to insure maximum SAFETY and PERFORMANCE.

Prices for all parts listed in this Catalog can be found in a separate Spare Parts Price List. Please contact Simon Aerials Parts Department for the latest edition of the Spare Parts Price List.

## HOW TO USE THIS CATALOG

The Cover Page indicates the specific model or models covered by this Parts Catalog.

The "Table of Contents" pages list the specific sections, pages and page titles that are relevant to this model, and contained in this Catalog. Only those pages that refer specifically to the RZB 50 or RZB 55 are included in this Catalog.

The "Primary Machine Component Groups" page illustrates the four major assemblies, along with their "Section" number.

The Parts Catalog is divided into "Sections", numbered from 1 through 99. Each section contains the individual parts that make up a major component, assembly or item. The first four sections (1 through 4) contain the major assemblies, or "Primary Machine Component Groups". Sections that follow contain sub-assemblies or components of these "major" assemblies.

If a part number is followed by a plate number in the "SEE SECTION" column, refer to the plate indicated for a further breakdown of components for that part number. Items with indented descriptions are components of the non-indented item directly above.

When selecting parts for a specific machine, be sure to verify the machine model number, and serial number or date code (found on the data plate). When ordering parts, always give:

1. Model and Serial Number
2. Item Part Number and Description
3. Order Quantity

If a part number is not listed for a selected item, please provide this additional information:

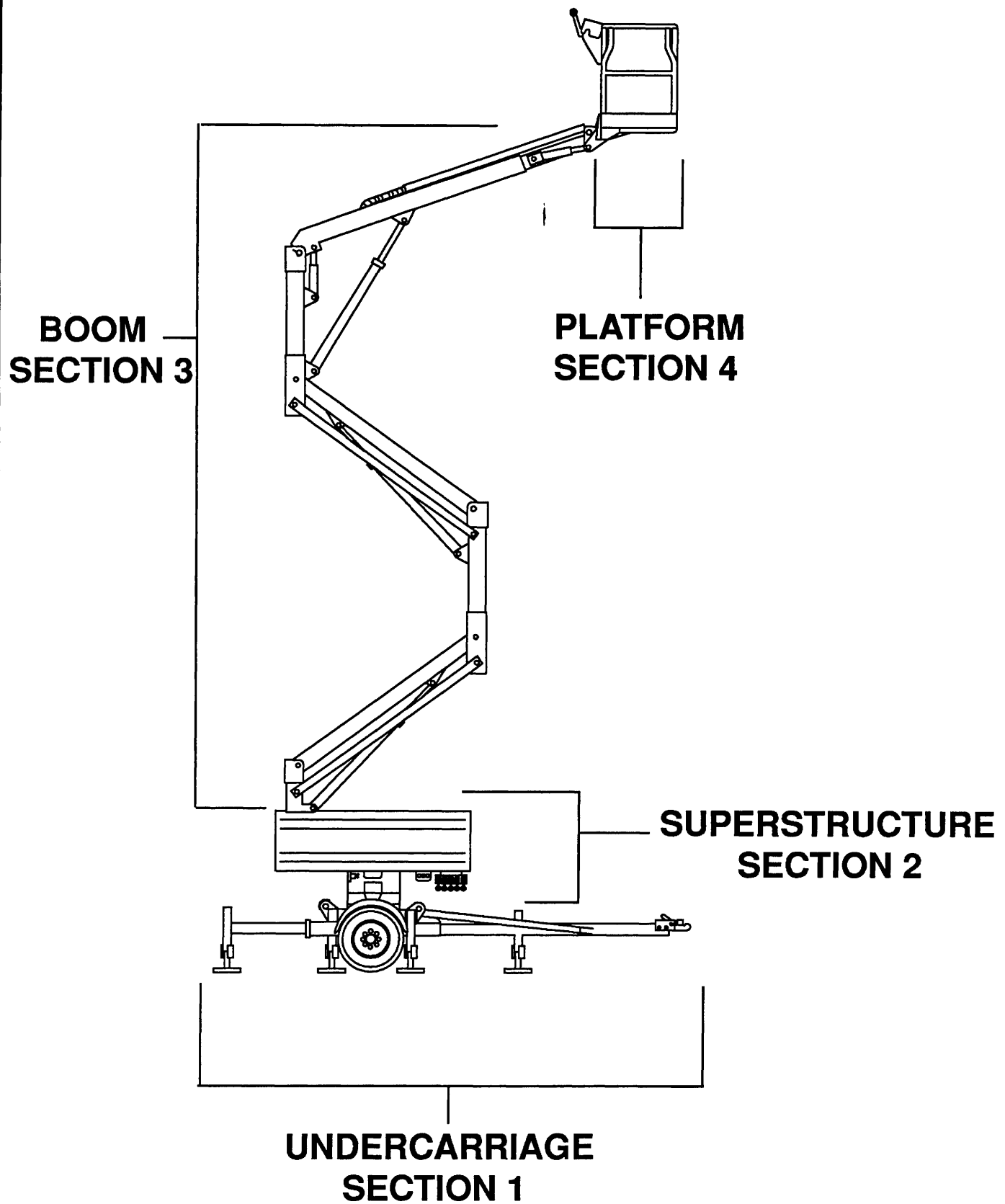
4. Parts Plate number, Item Number and Description of the desired item, OR
5. Part Number of the next assembly (Parent Part), if the desired item is not listed.

Some assembled items, such as hydraulic cylinders, may have been supplied by more than one source. While the assemblies may be able to be used interchangeably, FOR SAFETY'S SAKE, do not mix components or repair kits. Please confirm the make of the assembly on the unit before ordering or installing replacement parts.

Left and right-hand, front and rear OF THE TRAILER - MOUNTED UNIT should be determined as though you are standing at the Platform Control Console. Left and right-hand, front and rear OF THE TRAILER correspond to the unit as towed, with the HITCH TO THE FRONT. All dimensions are in inches unless otherwise specified.

SIMON AERIALS INC. reserves the right to change, improve, modify or expand features of its equipment. Therefore, specifications, models or equipment are subject to change without notice, and without incurring obligation to change, improve, modify or expand features of previously delivered units.

All SIMON AERIALS INC. manuals are periodically updated to reflect changes that occur in the equipment. Please contact Simon Aerials Technical Support Department with any questions you may have regarding your particular machine, or the availability of more recent manuals.



TITLE

PRIMARY MACHINE COMPONENT GROUPS

**SIMON AERIALS INC.**PART  
NO.PLATE  
NO.

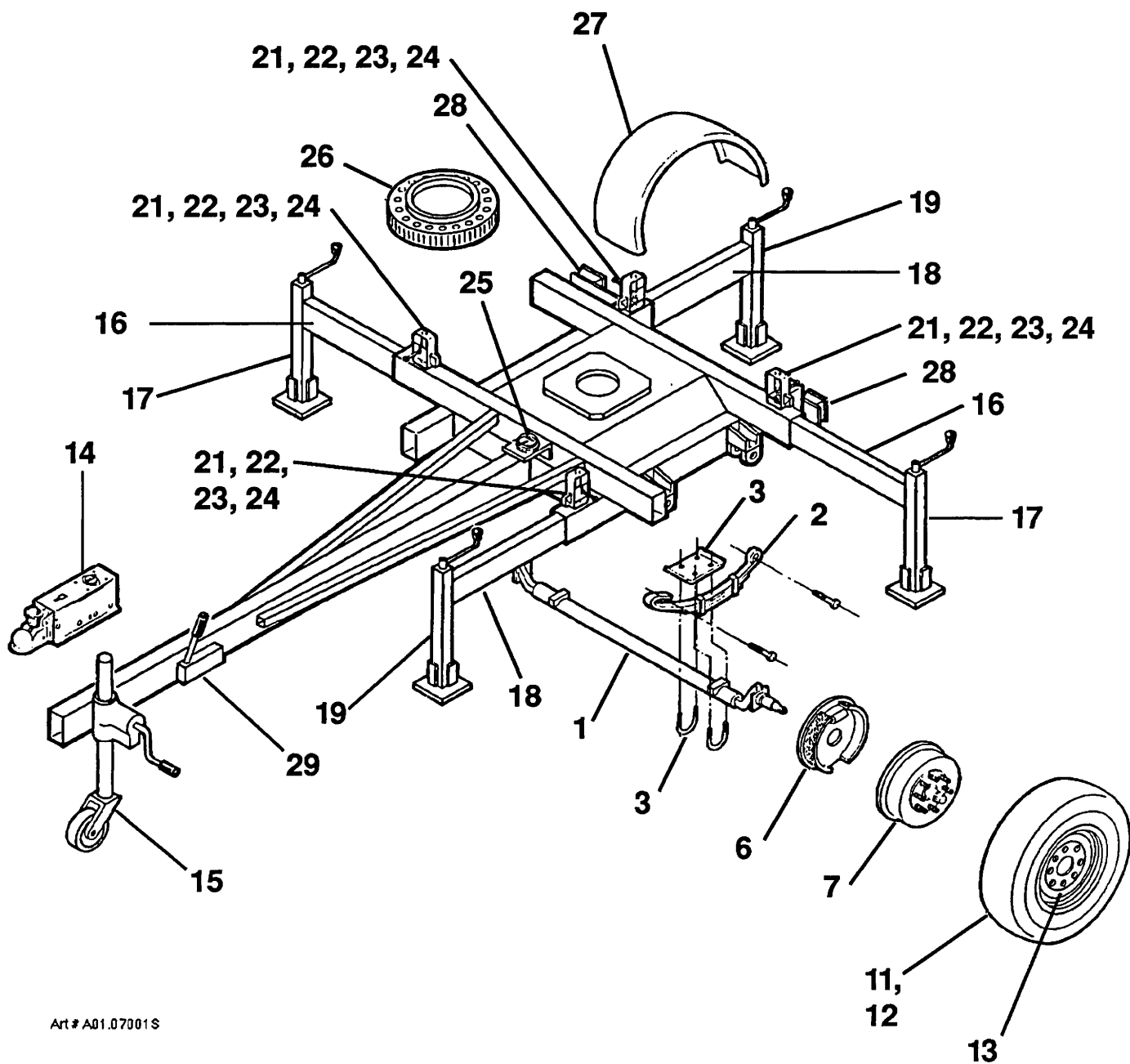
## PARTS LIST

ITEM	PART NO.	SEE SECTION	DESCRIPTION	QTY.
1	02-013400		AXLE ASSEMBLY, DROP [6000# (2722 kg) capacity]	1
2	02-013300		SPRING SET (includes two leaf spring assemblies)	1
3	10-067500		U-BOLT KIT (includes U-bolts, nuts and spring plates)	1
4	10-067400		MOUNTING KIT, SPRING (includes bolts and shackles)	1
5	02-014801		BUSHING, SPRING (nylon) (not shown)	6
6	02-013500		BRAKE SET, HYDRAULIC SURGE (12") (includes one backing plate and one shoe assembly)	2
7	02-013200		HUB AND DRUM SET (includes left and right assemblies)	1
8	02-014601		SEAL, GREASE (not shown)	2
9	02-014602		BEARING, INNER (not shown)	2
10	02-014603		BEARING, OUTER (not shown)	2
11	3511403		TIRE AND WHEEL ASSEMBLY	2
12	02-013700		TIRE (9.50 x 16.5" LT, 10 ply)	1
13	02-013600		WHEEL (16.5" x 6.75", 6.5" bolt circle, 8 bolt pattern)	1
14			COUPLING, TRAILER (includes brake actuator)	1
	02-014300	14.01	6,000 Lb. (2,722 Kg) capacity (use 02-035900)	
	02-035900		7,500 Lb. (3,402 Kg) capacity [for 2-5/16" (58.7 mm) ball]	
15	08-057200	14.03	JACK, TRAILER	1
16	2132030		OUTRIGGER ASSEMBLY, UPPER (includes item 17)	2
17	2123850		JACK ASSEMBLY, OUTRIGGER	1
18	2132020		OUTRIGGER ASSEMBLY, LOWER (includes item 19)	2
19	2123850		JACK ASSEMBLY, OUTRIGGER	1
20	2109380		PIN ASSEMBLY, OUTRIGGER INTERLOCK	4
21	03-416800		SWITCH, LIMIT	1
22	10-068500		SPRING, COMPRESSION	1
23	2109360		PIN, INTERLOCK	1
24	10-042400		KNOB, BALL	1
25	10-003300		INDICATOR, LEVEL	1
26	08-058700		SWING BEARING	1
27	2114190		FENDER ASSEMBLY	2
28	03-412900		LIGHT KIT, TRAILER (includes all tail and side marker lights)	1
29	02-013100		BRAKE KIT, PARKING	1
			Note: was plate 1.2 in some earlier catalogs.	

**Note:** was plate 1.2 in some earlier catalogs.

3516080

3516080



Art# A01.07001S

TITLE

TRAILER ASSEMBLY, RZB 50 AND RZB 55

**SIMON AERIALS INC.**

REV. 16 JAN., 1992

PART  
NO.

3516080

PLATE  
NO.

01.07

## PARTS LIST

ITEM	PART NO	SEE SECTION	DESCRIPTION	QTY.
1	03-400900		BATTERY, 12 VOLT DC (105 Amp hour)	4
2	11-079100		TRAY, BATTERY	1
3	03-415300		RELAY, SOLENOID (Single pole, single throw, 24 Volt DC)	1
4			BOX, JUNCTION	1
5	03-422300		STRIP, TERMINAL	A.R.
6	03-415400	16.01	SWIVEL, ELECTRICAL	1
7	01-066200		FILTER ASSEMBLY, RETURN	1
8	01-066201		ELEMENT, RETURN FILTER	1
9	10-080200		CAP, HYDRAULIC TANK	1
10	01-037100		VALVE, PRESSURE DUMP SOLENOID	1
11	01-037199		COIL, SOLENOID VALVE (24 Volt DC)	1
12	03-407200		HORN, TILT ALARM	1
13	03-023900		SENSOR, TILT ALARM	1
14	10-113400		COVER WELDMENT, SUPERSTRUCTURE	1
15	01-080800		MOTOR AND PUMP ASSEMBLY (24 Volt DC)	1
16	01-082500		MANIFOLD ASSEMBLY, SWING RELIEF VALVE	1
17	01-071600		MOTOR, SWING	1
18	02-020500		PINION GEAR (16 tooth)	1
19			VALVE, CHECK	1
20	10-110500		BOX ASSEMBLY, GROUND CONTROL	1
21	10-105400		DECAL, GROUND CONTROL BOX	1
22	03-410200		SWITCH, KEY OPERATED	1
23	03-421800		BASE ASSEMBLY, MOUNTING	1
24	03-454900		BASE, SWITCH MOUNTING	1
25	03-437200		BLOCK, CONTACT (normally open)	1
26	03-410000		SWITCH, 2 POSITION ROTARY	1
27	03-410100		BASE ASSEMBLY, MOUNTING	1
28	03-454900		BASE, SWITCH MOUNTING	1
29	03-437200		BLOCK, CONTACT (normally open)	1
30	03-437300		BLOCK, CONTACT (normally closed)	1
31	03-421900		SWITCH, PUSH BUTTON	1
32	03-421800		BASE ASSEMBLY, MOUNTING	1
33	03-454900		BASE, SWITCH MOUNTING	1
34	03-437200		BLOCK, CONTACT (normally open)	1
35	01-086500		PUMP, EMERGENCY (hand operated)	1
36	01-083700		VALVE, CHECK	1
37	01-072900	06.06	VALVE BANK ASSEMBLY, GROUND	1
38	03-401000		CHARGER, BATTERY (24 Volt DC)	1
39	10-105600		DECAL, GROUND CONTROL VALVE	1
Note: was plate 2.2 in some earlier catalogs.				

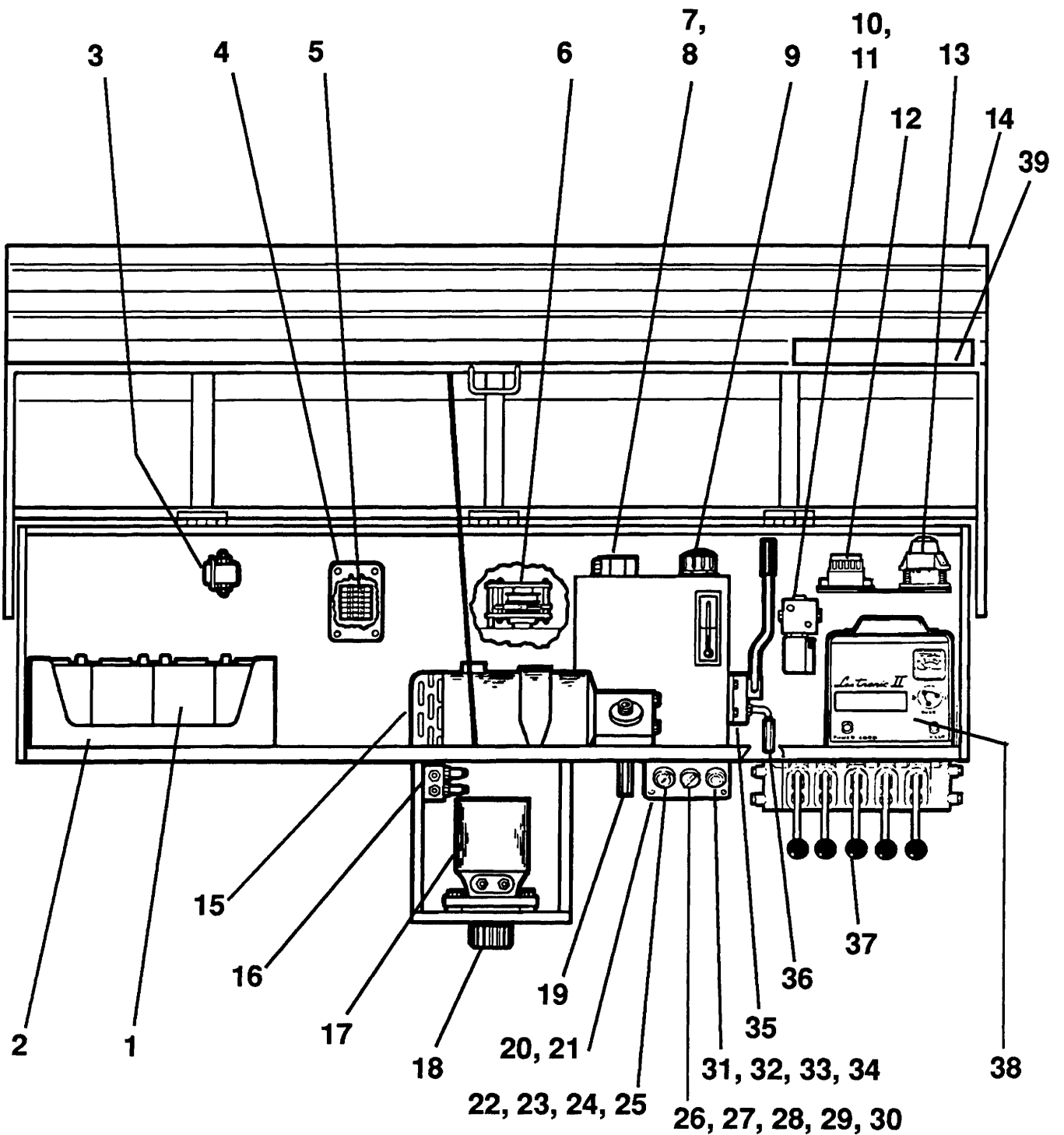
**TITLE** SUPERSTRUCTURE ASSEMBLY, RZB 50 & RZB 55 (ELECTRIC OPERATED)

**PLATE NO.** 02.07

**SIMON AERIALS INC.**

REV. 02/22/91

**PART NO.**



TITLE SUPERSTRUCTURE ASSEMBLY, RZB 50 & RZB 55 (ELECTRIC OPERATED)

**SIMON AERIALS INC.**

REV. 02/22/91

PART  
NO.

PLATE  
NO. 02.07

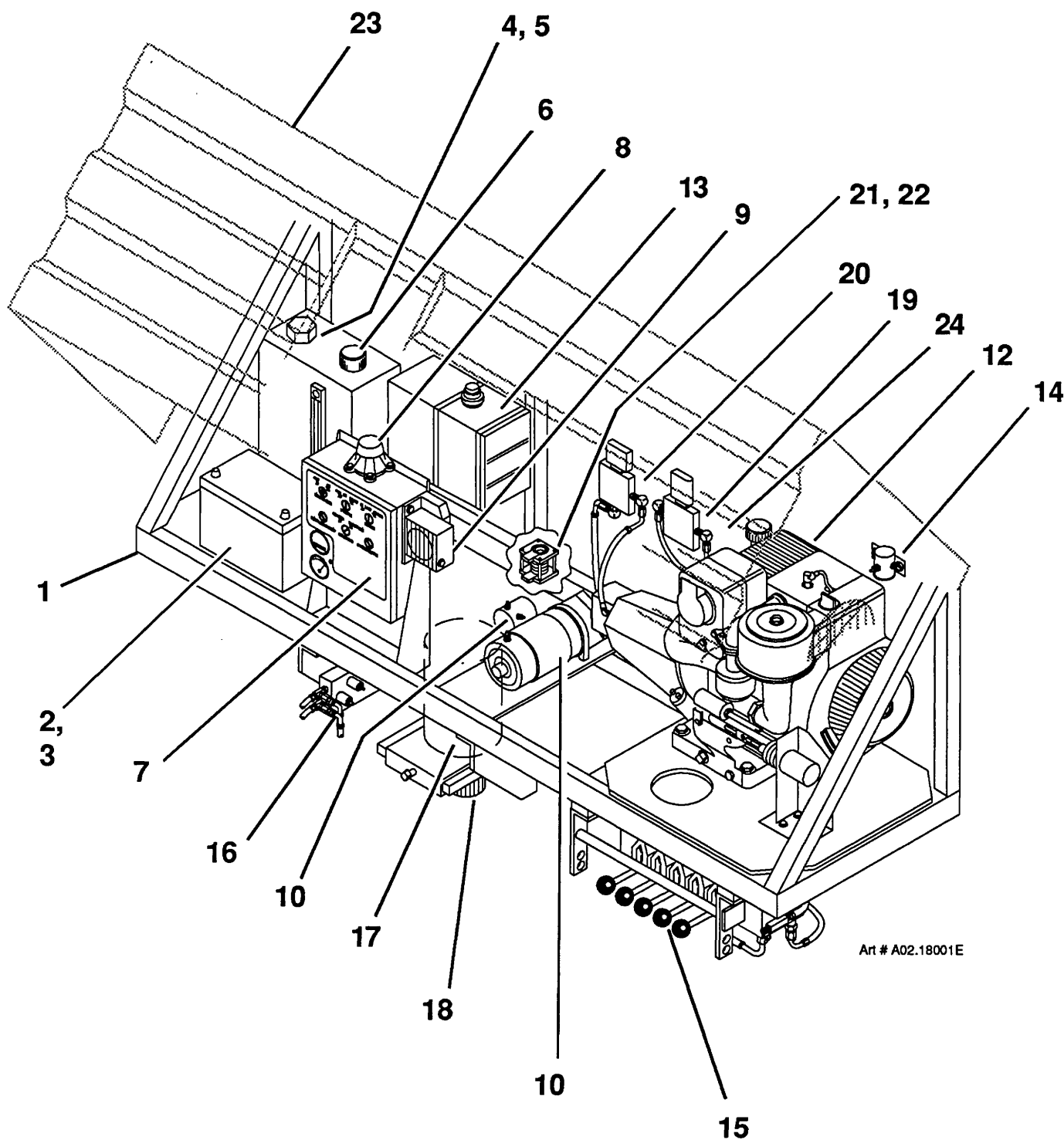


## PARTS LIST

ITEM	PART NO	SEE SECTION	DESCRIPTION	QTY.
	3520570		SUPERSTRUCTURE ASSEMBLY (with Briggs gas engine)	1
	3520360		SUPERSTRUCTURE ASSEMBLY (Briggs dual fuel engine)	1
	3523300		SUPERSTRUCTURE ASSEMBLY (with Honda gas engine)	1
1	No Part # 2185680		SUPERSTRUCTURE WELDMENT except Honda engine with Honda engine	1 1
2	03-423200		BATTERY, 12 VOLT DC (505 Amp)	1
3	03-423300		CLAMP, BATTERY HOLD DOWN	2
4	01-066200		FILTER ASSEMBLY, RETURN	1
5	01-066201		ELEMENT, RETURN FILTER	1
6	10-080200		CAP, HYDRAULIC TANK	1
7	3518890	07.16	BOX ASSEMBLY, GROUND CONTROL	1
8	03-023900		SENSOR, TILT ALARM	1
9	03-407200		HORN, TILT ALARM	1
10	01-027200	12.03	PUMP, EMERGENCY HYDRAULIC	
			<b>Note:</b> Three post relay that comes with pump <b>must be replaced</b> with four post relay (#11), below.	1
11	03-465200		RELAY, EMERGENCY PUMP	
			<b>Note:</b> Three post relay that comes with pump (#10) <b>must be replaced</b> with this four post relay.	1
12	3520650	08.12	ENGINE ASSEMBLY (Briggs Type 4041)	1
	3522450	08.22	ENGINE ASSEMBLY (Honda GX 340 Q)	1
13			TANK, FUEL (comes with engine)	1
14	03-051300		RELAY (Single pole, single throw)	
			used with Briggs Type 4041 engine only.	1
15	01-072900	06.06	VALVE BANK ASSEMBLY, GROUND	1
16	01-082500		MANIFOLD ASSEMBLY, SWING RELIEF VALVE	1
17	01-082700		MOTOR, SWING	1
18	02-020500		PINION GEAR (16 tooth)	1
19			VALVE, SOLENOID (3-way) (12 Volt DC)	
			(Lower boom dump valve)	1
20	01-084800		VALVE, SOLENOID (3-way) (12 Volt DC)	
			(Outrigger dump valve)	1
21	03-415400		SWIVEL, ELECTRICAL	1
22	2143910		COLLAR, SWIVEL LOCK	1
23			COVER WELDMENT, SUPERSTRUCTURE	
	10-113500		used with Briggs Type 4041 engine	1
	2185450		used with Honda GX 340 Q engine	1
24	10-105600		DECAL, GROUND CONTROL VALVE	1

**TITLE** SUPERSTRUCTURE ASSEMBLY, RZB 50 & RZB 55 (FUEL OPERATED)

<b>PLATE NO.</b>	02.18	<b>SIMON AERIALS INC.</b>	REV. 30 AUG., 1993	<b>PART NO.</b>
------------------	-------	---------------------------	--------------------	-----------------



Art # A02.18001E

TITLE SUPERSTRUCTURE ASSEMBLY, RZB 50 & RZB 55 (FUEL OPERATED)

**SIMON AERIALS INC.**

REV. 30 AUG., 1993

PART  
NO.

PLATE  
NO.

02.18

[illegible]

**TITLE BOOM ASSEMBLY, RZB 50 & RZB 55 (PLATE 1 OF 3 . . . LOWER BOOM)**

PLATE NO. 03.04

# SIMON AERIALS INC.

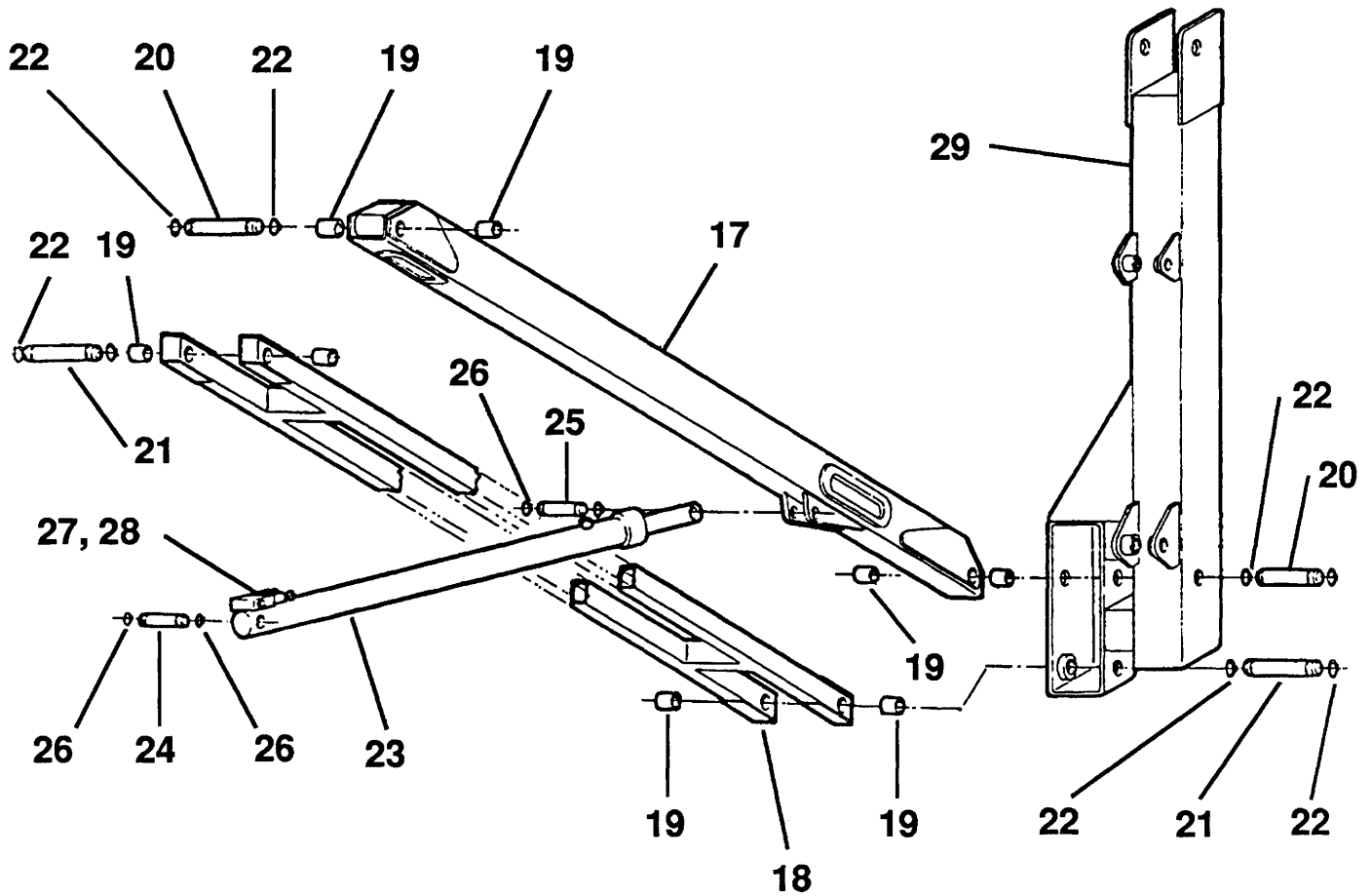
REV. 16 JAN., 1992

PART  
NO.



[illegible]

TITLE				BOOM ASSEMBLY, RZB 50 & RZB 55 (PLATE 2 OF 3 . . . MID BOOM)			
PLATE NO.		03.04		SIMON AERIALS INC.		REV. 16 JAN., 1992	
				PART NO.			



TITLE BOOM ASSEMBLY, RZB 50 & RZB 55 (PLATE 2 OF 3 . . . MID BOOM)

**SIMON AERIALS INC.**

REV. 16 JAN., 1992

PART  
NO.

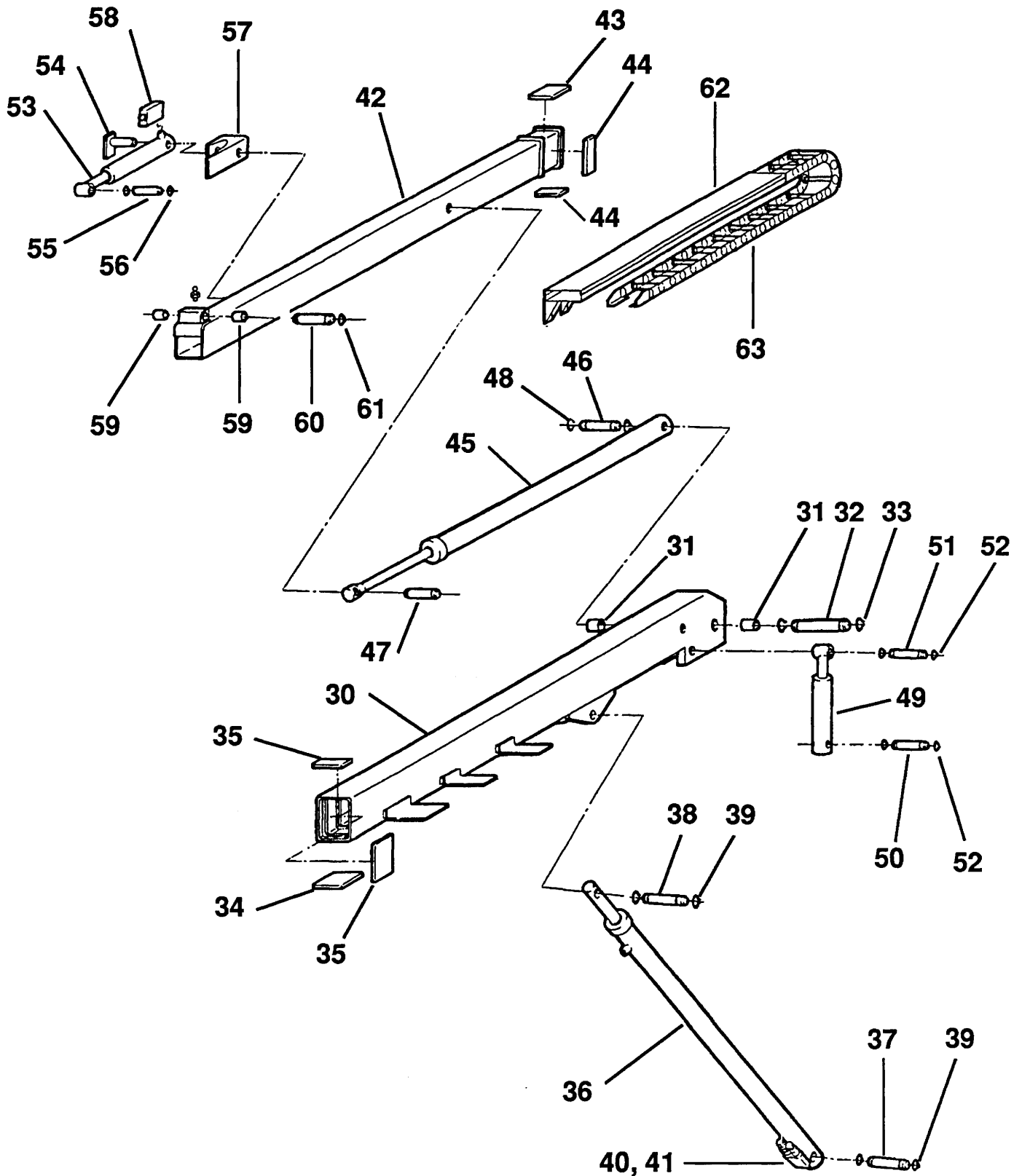
PLATE  
NO.

03.04



PARTS LIST			
ITEM	PART NO	SEE SECTION	DESCRIPTION
30			BOOM WELDMENT, UPPER
31			BUSHING [35.0 mm (1.378"
32	10-097500		PIN, UPPER BOOM PIVOT
33			RING, RETAINING [35.0 mm
34	10-098400		PAD, BOTTOM WEAR (base
35	10-098300		PAD, SIDE AND TOP WEAR
36	04-027600		CYLINDER, UPPER BOOM
37	10-097800		PIN, LIFT CYLINDER (upper
38	10-098600		PIN, LIFT CYLINDER (upper
39			RING, RETAINING
40	01-067300		VALVE, LIFT CYLINDER HO
41	01-069500		CARTRIDGE, LIFT CYLI
42			BOOM WELDMENT, UPPER
43	10-098100		PAD, TOP WEAR (tip boom,
44	10-098200		PAD, SIDE AND BOTTOM V
45	04-028700		CYLINDER, TELESCOPE (e
46	10-097300		PIN, TELESCOPE CYLINDE
47	10-097400		PIN, TELESCOPE CYLINDE
48			RING, RETAINING
49	04-027000		CYLINDER, MASTER LEVE
50	10-097700		PIN, MASTER CYLINDER (k
51	10-097600		PIN, MASTER CYLINDER (r
52			RING, RETAINING
53	04-027000		CYLINDER, SLAVE LEVELI
54	10-097000		PIN, SLAVE CYLINDER (ba
55	10-095100		PIN, SLAVE CYLINDER (roc
56			RING, RETAINING
57			BRACKET, SLAVE CYLINDE
58	01-082900		CHECK VALVE, SLAVE CYL
59	10-095400		BUSHING [1.00" (25.4 mm)
60	10-095300		PIN, PLATFORM PIVOT
61			RING, RETAINING [1.00" (2
62	10-098500		ANCHOR, MOVING
63	08-062200		CARRIER, HOSE
			NOTE: WAS PLATE 3.2 IN

PLATE NO.	03.04	SIMON AERIALS INC.
-----------	-------	--------------------



TITLE BOOM ASSEMBLY, RZB 50 & RZB 55 (PLATE 3 OF 3 . . . UPPER BOOM)

**SIMON AERIALS INC.**

REV. 16 JAN., 1992

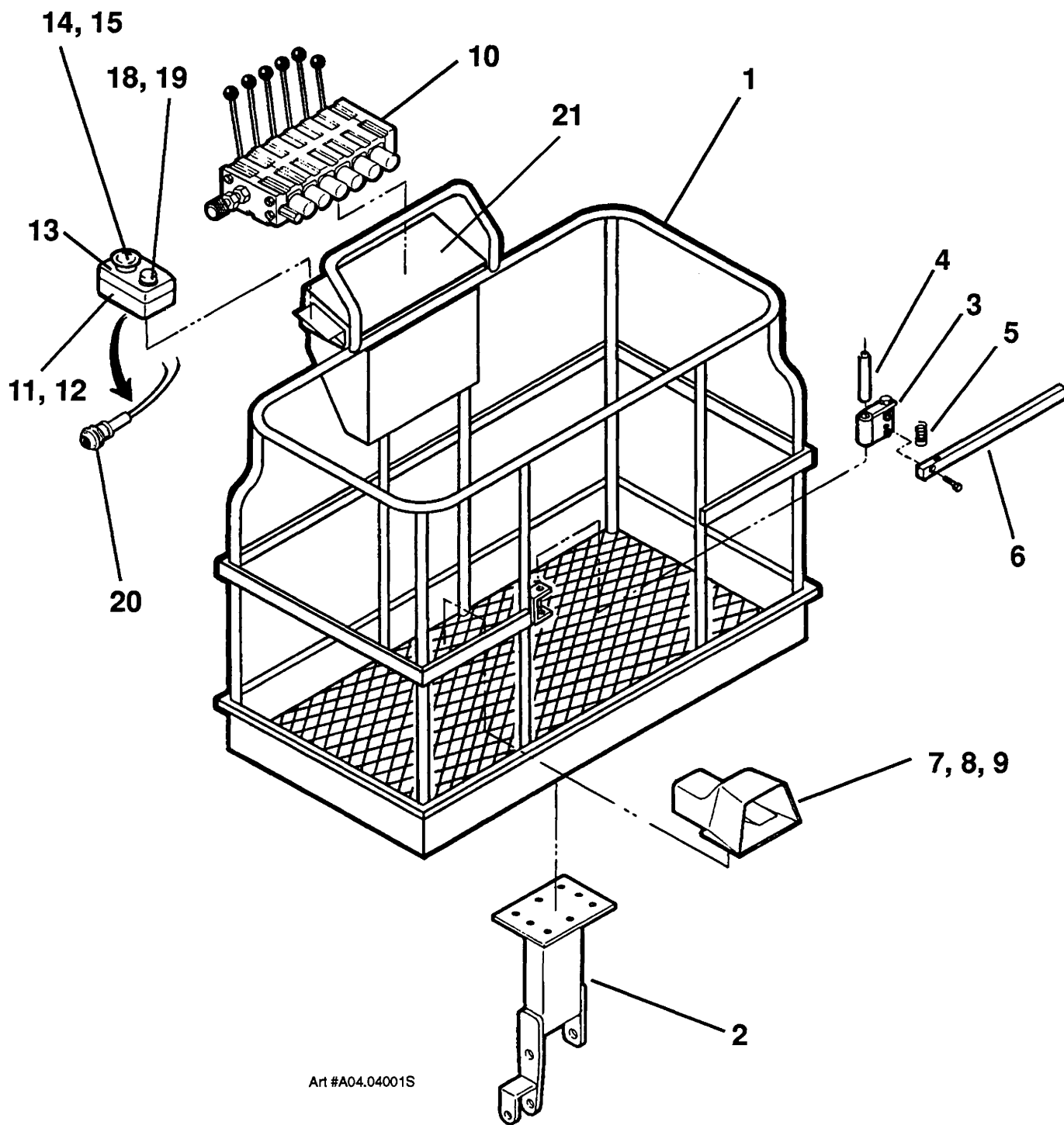
PART  
NO.

PLATE  
NO.

03.04



[illegible]



TITLE PLATFORM ASSEMBLY, RZB 50 & RZB 55 (ELECTRIC OPERATED)

**SIMON AERIALS INC.**

REV. 02/22/91

PART  
NO.

PLATE  
NO.

04.04

## PARTS LIST

[illegible]

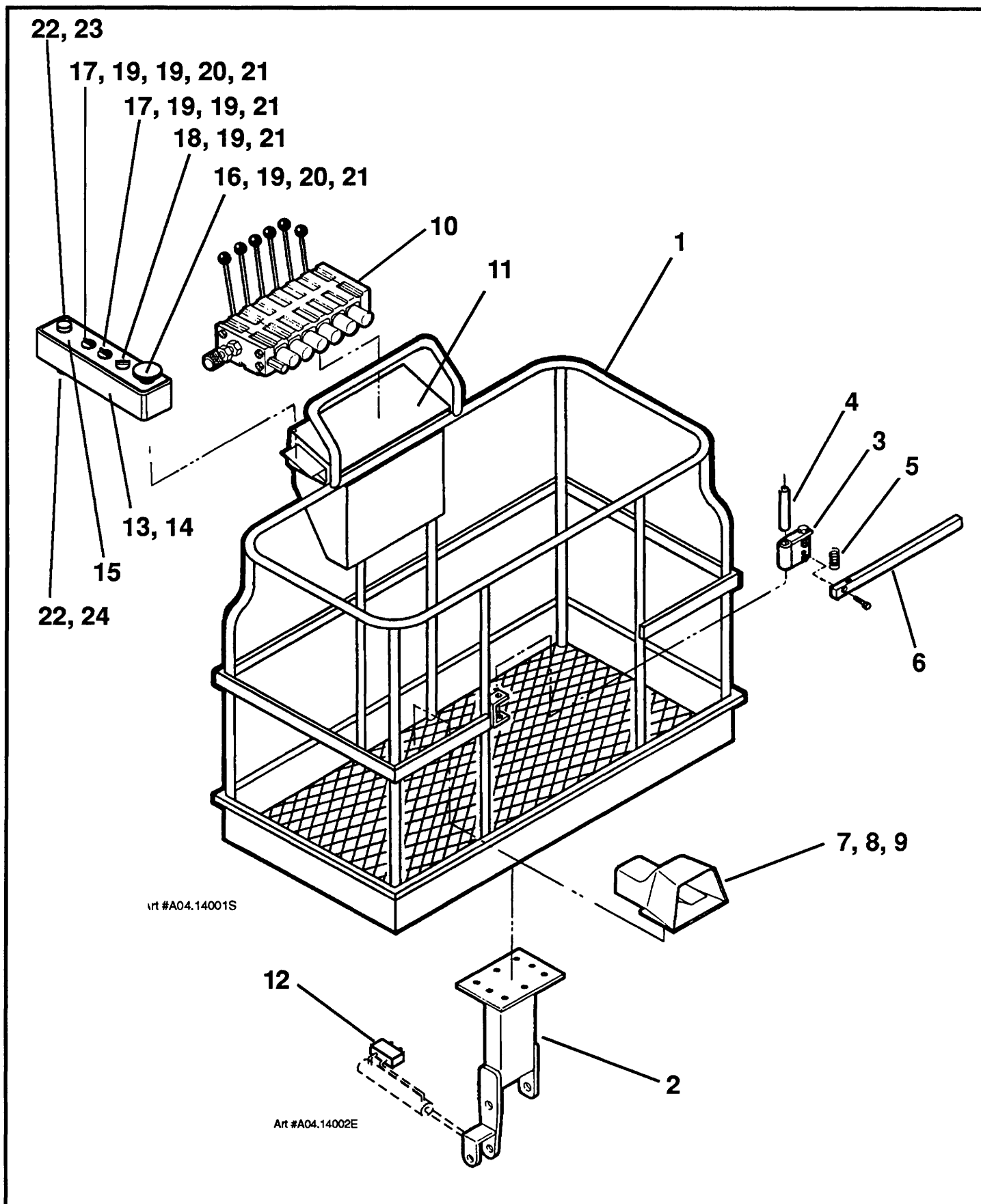
TITLE	PLATFORM ASSEMBLY, RZB 50 & RZB 55 (FUEL OPERATED)
-------	--

PLATE NO. 04.14

## SIMON AERIALS INC.

REV. 02/22/91

PART  
NO.



TITLE PLATFORM ASSEMBLY, RZB 50 & RZB 55 (FUEL OPERATED)

**SIMON AERIALS INC.**

REV. 02/22/91

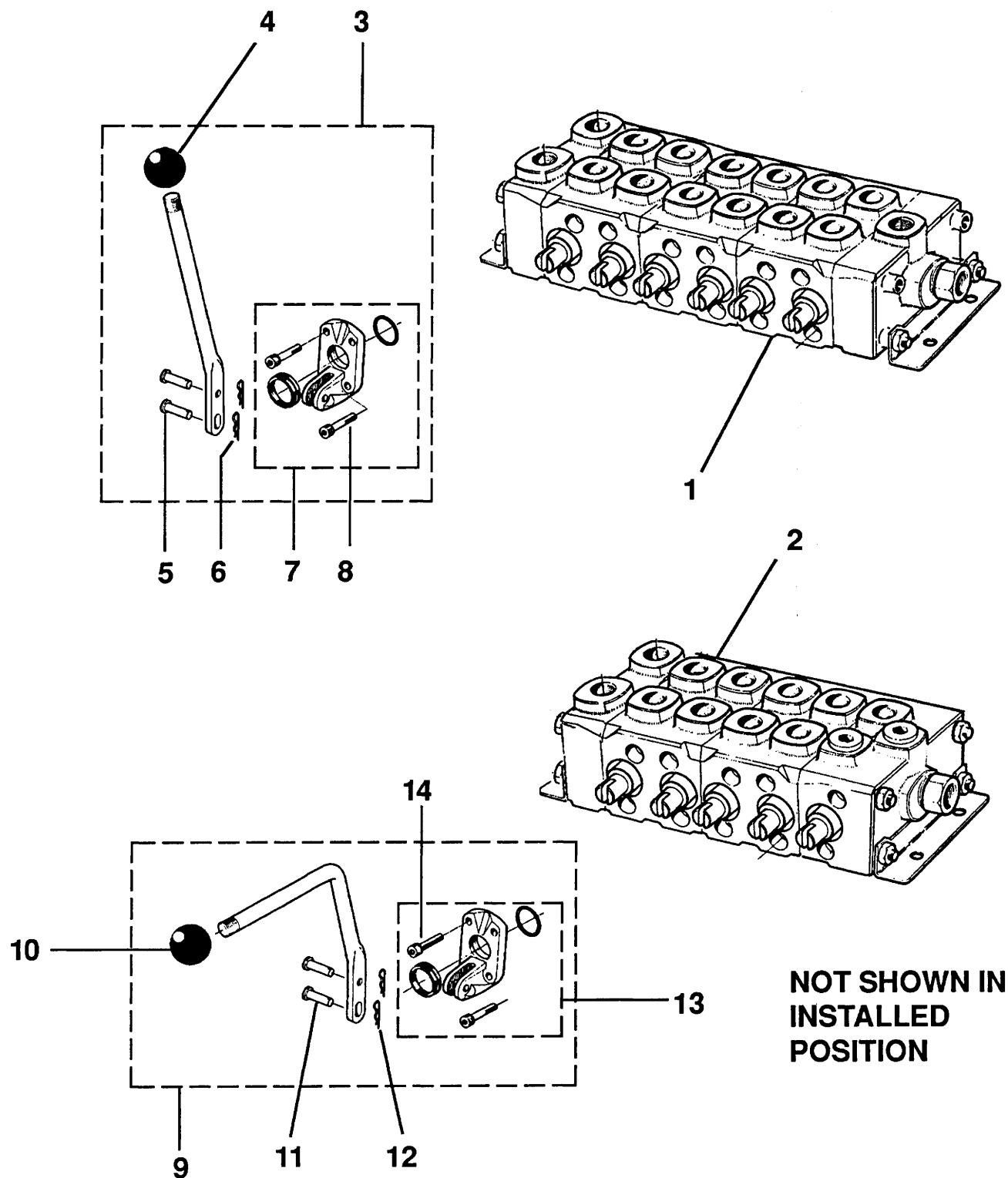
PART  
NO.

PLATE  
NO.

04.14

[illegible]

PLATE NO. 6.6	SIMON AERIALS INC.	REV. 03 SEP., 1993 THIS SHEET ONLY	PART NO.
---------------	--------------------	---------------------------------------	----------



TITLE GROUND/ PLATFORM VALVE BANK ASS'Y., RZB 50 & RZB 55 (PLATE 1 OF 2)

**SIMON AERIALS INC.**

PART  
NO.

PLATE  
NO. 6.6



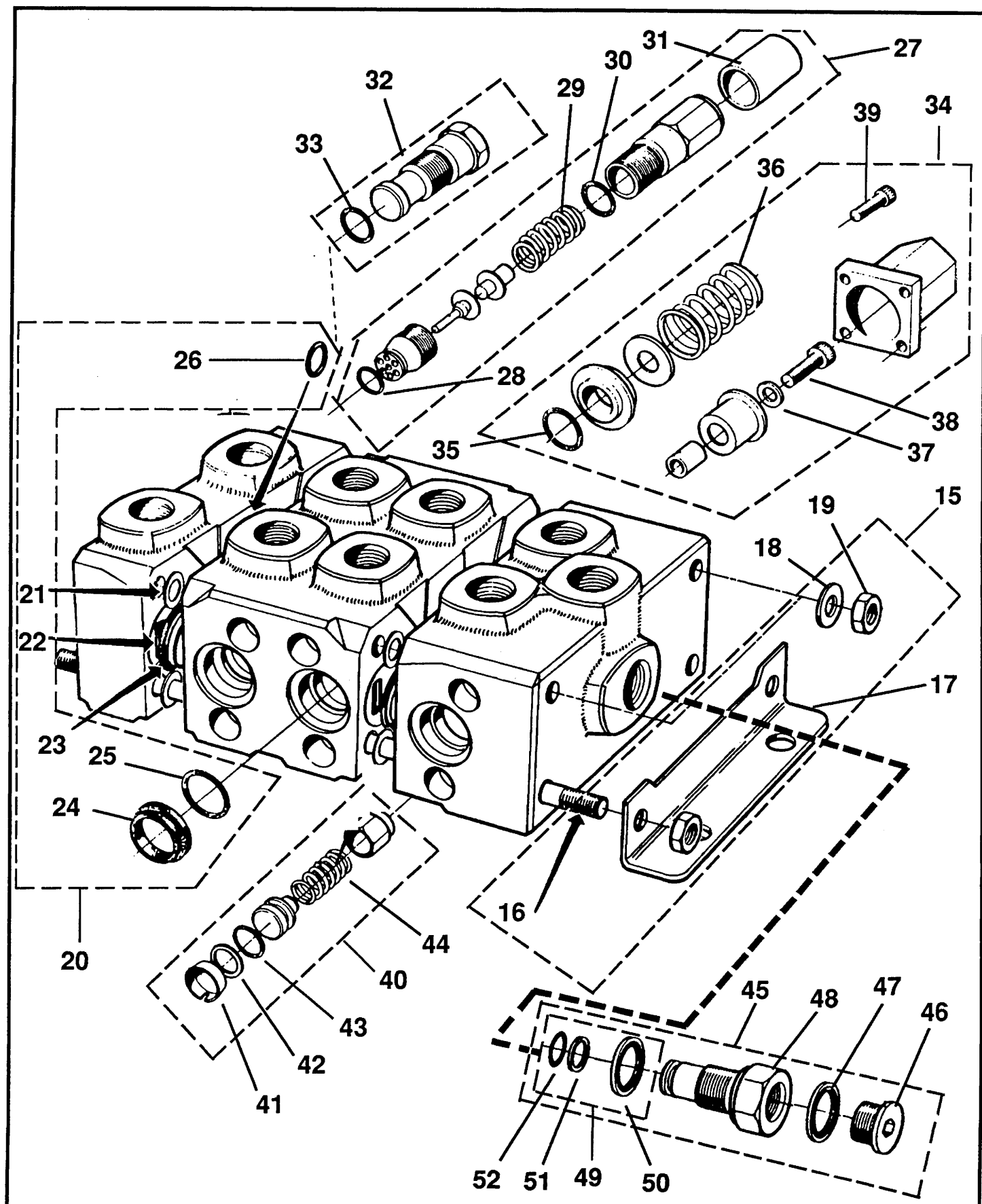
## PARTS LIST

ITEM	PART NO	SEE SECT.	DESCRIPTION	QTY.
15	01-072706		TIE ROD KIT (FOR 5 OR 6 SECTION UNIT)	2
16			PLATE, VALVE BLOCK MOUNTING	1
17			ROD, TIE	4
18			WASHER	8
19	01-072709		NUT	8
20			SEAL KIT	1
21			RING, SPACER	
22			O-RING	
23			RING, BACK-UP	
24			SEAL	
25			O-RING	
26			O-RING	
27	01-072703		VALVE ASSEMBLY, MAIN RELIEF	1
28			O-RING	1
29			SPRING	1
30			O-RING	1
31			CAP, SEAL	1
32			PLUG	1
33			O-RING	1
34			CAP ASSEMBLY, VALVE SPRING	AR
35	01-072710		O-RING	1
36			SPRING	1
37			WASHER	1
38			SCREW	1
39	01-072704		SCREW	4
40			VALVE, CHECK	AR
41			CAP, PROTECTIVE	1
42			RING, BACK-UP	1
43			O-RING	1
44			SPRING	1
45			CONNECTION PORT, BLOCKING	
46			PLUG	1
47	01-072708		RING, SEALING	1
48			SLEEVE, POWER BEYOND (GROUND ONLY)	1
49			CONNECTION PORT, TANK VALVE	
50			RING, SEALING	1
51			RING, BACK-UP	1
52			O-RING	1

TITLE GROUND/ PLATFORM VALVE BANK ASS'Y., RZB 50 & RZB 55 (PLATE 2 OF 2)

PLATE NO. 6.6 **SIMON AERIALS INC.**

PART  
NO.



TITLE GROUND/ PLATFORM VALVE BANK ASS'Y., RZB 50 & RZB 55 (PLATE 2 OF 2)

**SIMON AERIALS INC.**

PART  
NO.

PLATE  
NO. 6.6



## PARTS LIST

[illegible]

**TITLE**

## GROUND CONTROL BOX

**PLATE  
NO.**

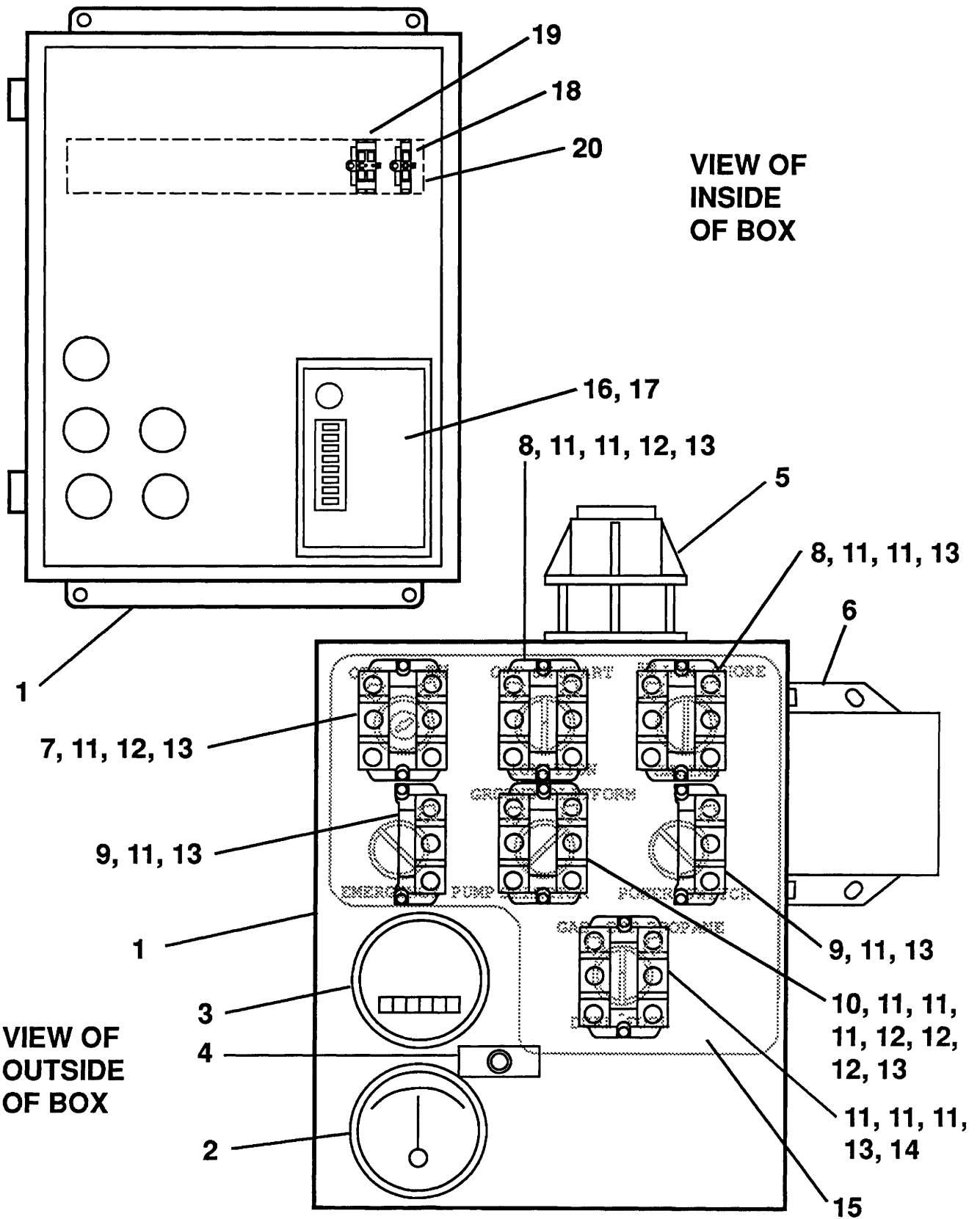
07.16

## SIMON AERIALS INC.

REV. 02/22/91

**PART NO.** 3518890

**PART NO. 3518890**



TITLE

GROUND CONTROL BOX

**SIMON AERIALS INC.**

REV. 02/22/91

PART  
NO.

3518890

PLATE  
NO.

07.16

## PARTS LIST

[illegible]

**TITLE**

## ENGINE ASSEMBLY, BRIGGS 8 H.P.

**PLATE  
NO.**

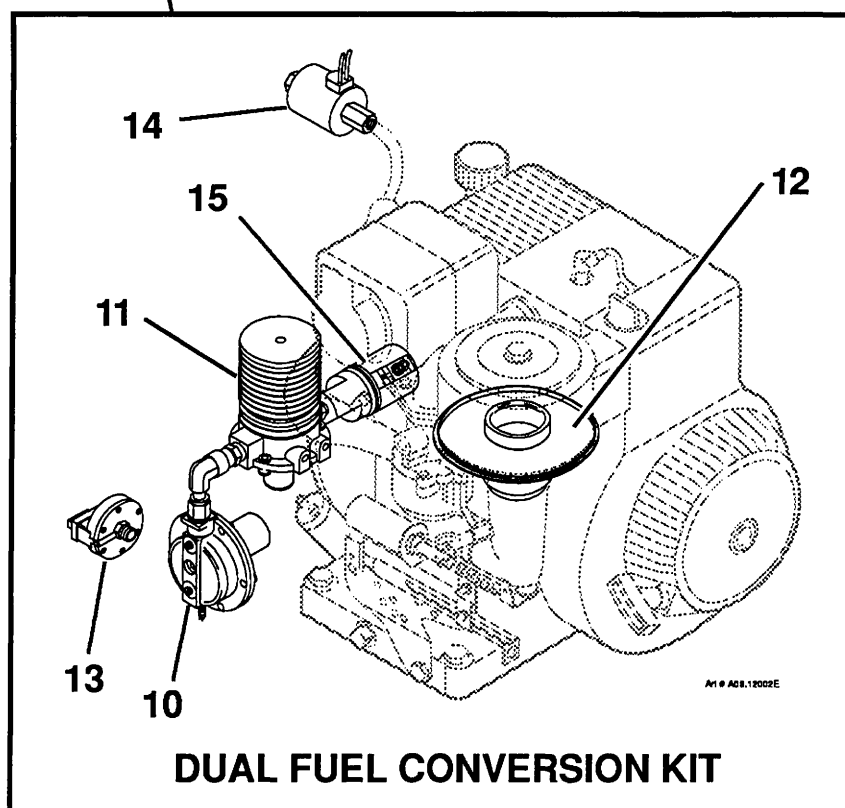
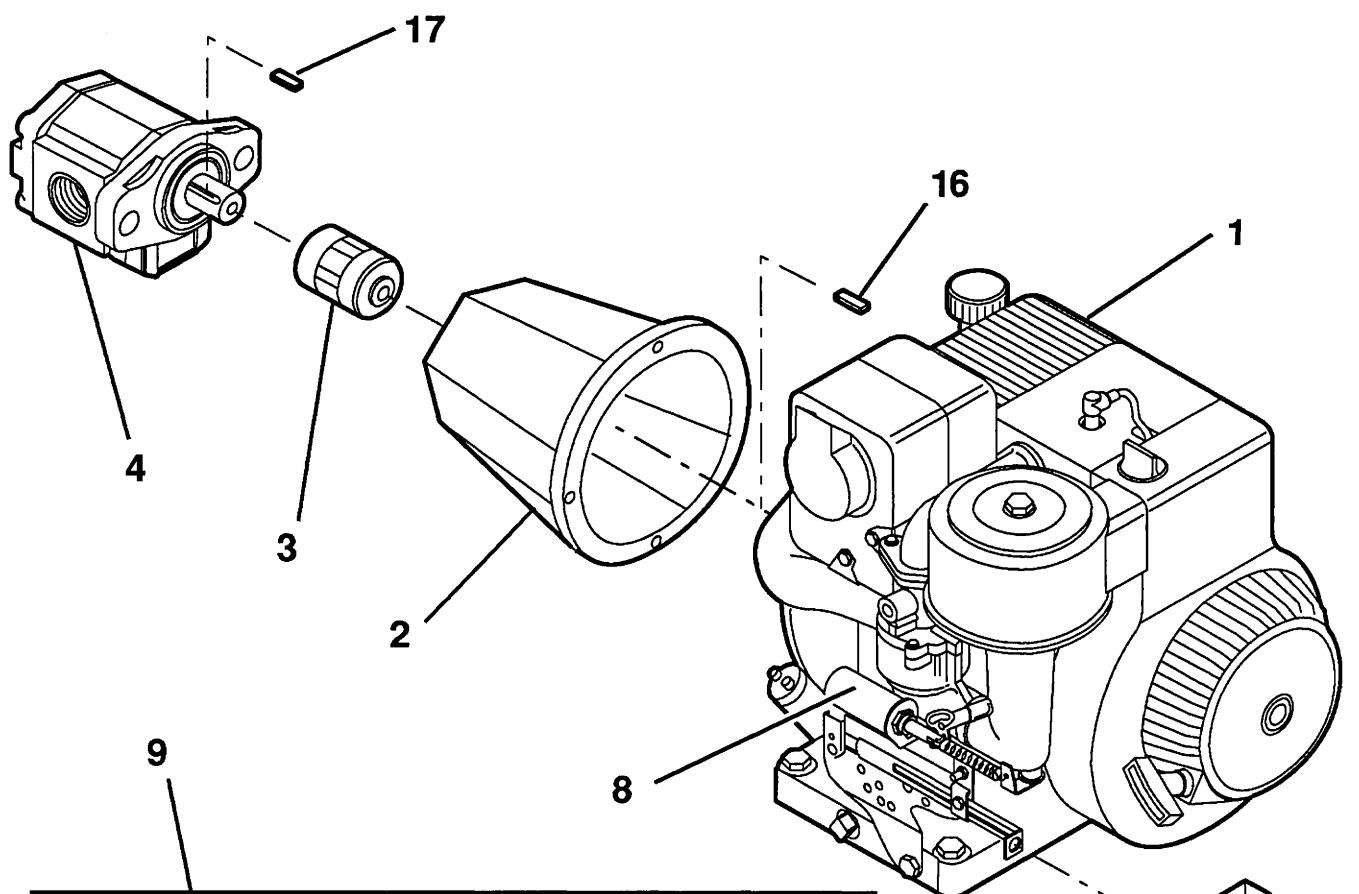
08.12

# SIMON AERIALS INC.

REV. 08 SEP., 1993

PART  
NO.

3520650



Art # A08.12001E

TITLE

ENGINE ASSEMBLY, BRIGGS 8 H.P.

**SIMON AERIALS INC.**

REV. 08 SEP., 1993

PART  
NO.

**3520650**

PLATE  
NO.

**08.12**

## PARTS LIST

[illegible]

**TITLE**

## ENGINE ASSEMBLY, HONDA GX

**PLATE  
NO.**

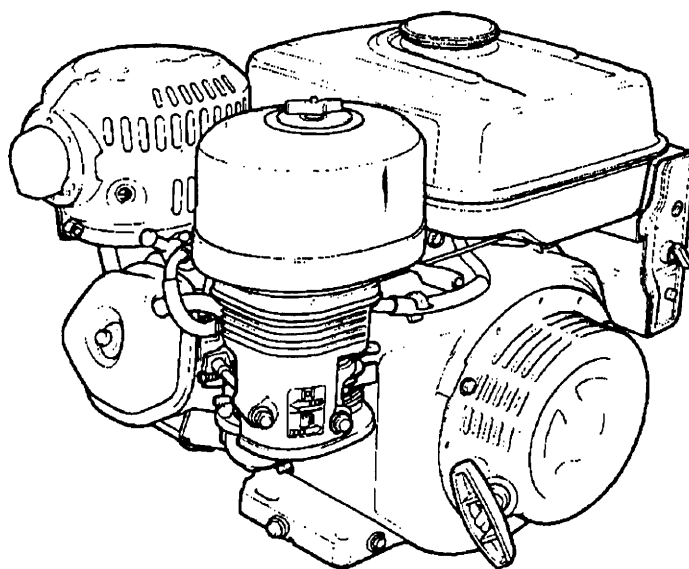
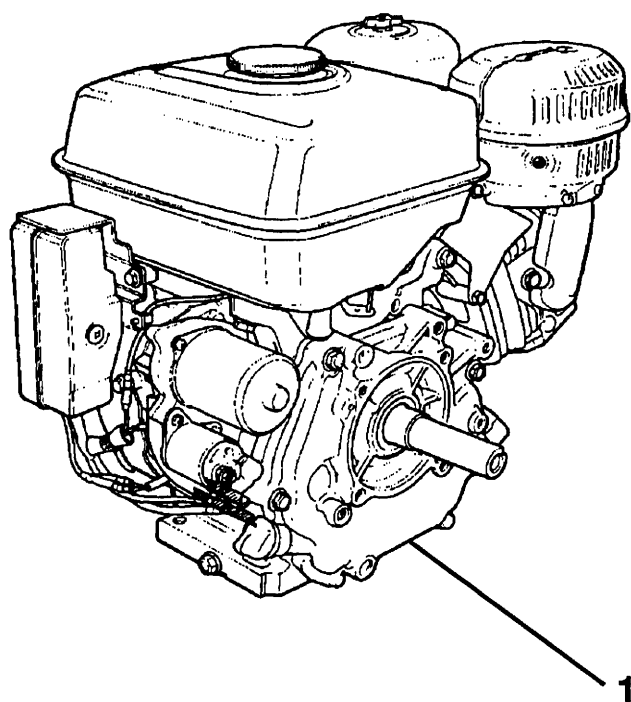
08.22

## SIMON AERIALS INC.

NEW 02/22/91

PART  
NO.

**3522450**



TITLE

ENGINE ASSEMBLY, HONDA GX

**SIMON AERIALS INC.**

NEW 02/22/91

PART  
NO.

3522450

PLATE  
NO.

08.22



## PARTS LIST

ITEM	PART NO	SEE SECTION	DESCRIPTION	QTY.
1	01-027204		MOTOR, ELECTRIC PUMP	1
2	01-027203		RELAY, SOLENOID (for all models <b>except RZB</b> )	1
	03-465200		RELAY, SOLENOID (for model RZB)	1
			<b>Note:</b> Relay has <b>three</b> posts.	
			<b>Note:</b> Relay has <b>four</b> posts.	
			<b>Note:</b> When replacing Emergency Pump 01-027200 on a model <b>RZB</b> Aerial Platform, Relay <b>01-027203</b> must be <b>removed</b> , and <b>replaced</b> with Relay <b>03-465200</b> .	
3	01-027205		COUPLING, PUMP	1
4	01-027202		GASKET, PUMP	1
5			PLATE, DRIVE	1
6			CASE	1
7			PLATE, END	1
8			GEAR	2
9			SHAFT, DRIVE	1
10			SHAFT, IDLER	1
11			BEARING	4
12			KEY, DOWEL	1
13			BALL	1
14			RING, RETAINING	4
15			PIN, DOWEL	2
16	01-027201		SEAL KIT	1
			<b>Note:</b> Items in seal kit are identified by asterisk (*).	
17	*		SEAL, SHAFT	1
18	*		O-RING	2
19	01-027206		RELIEF VALVE ASSEMBLY	1
20			NUT, ACORN	1
21			GASKET, METAL	1
22			NUT, HEX JAM	1
23			SCREW, ADJUSTING	1
24			SPRING	1
25			GUIDE, SPRING	1
26			BALL	1
27			CAP, VALVE	1
28			WASHER, SEALING	1
29			SPRING	1
30			BALL	1

TITLE

EMERGENCY PUMP

PLATE NO. 12.03

**SIMON AERIALS INC.**

REV. 08 OCT., 1993

PART NO. 01-027200





## PARTS LIST

ITEM	PART NO	SEE SECTION	DESCRIPTION	QTY.
1	02-013004		CASE, COUPLER	1
2	02-013001		WHEEL, HAND	1
3	02-013002		LOCK, HAND WHEEL	1
4	02-013005		SPRING	1
5	02-013006		BALL LATCH	1
6	02-013007		LOCK PLATE	1
7	02-013008		LATCH BOLT	1
8	02-013010		DAMPER	1
9	02-013009		CAP SCREW, HEX HEAD (7/16"-20)	1
10	02-013003		LOCKNUT, THIN (7/16"-20)	1
11	02-013018		CASE, OUTER	1
12	02-013012		COVER, FRONT	1
13	02-013011		SCREW, COVER	2
14	02-013017		STRUT	1
15	02-013013		CAP SCREW, HEX HEAD (1/2"-20)	2
16	02-013014		ROLLER	4
17	02-013019		LOCKNUT (1/2"-20)	2
18	02-013015		LEVER, BREAKAWAY	1
19	02-013016		SPRING, BREAKAWAY LEVER	1
20	02-013023		RESERVOIR, BRAKE MASTER CYLINDER	1
21	02-013025		ROD, PUSH	1
22	02-013022		GASKET, COVER	1
23	02-013021		COVER, BRAKE MASTER CYLINDER	1
24	02-013020		CAP, FILLER	1
25			CAP SCREW, HEX HEAD (1/4"-20)	4
26			LOCKNUT (1/4"-20)	4
27	02-013024		REPAIR KIT, BRAKE MASTER CYLINDER (not shown)	1

**TITLE** TRAILER COUPLING [6,000 LB. (2,722 KG.) CAPACITY]

<b>PLATE NO.</b>	14.01	<b>SIMON AERIALS INC.</b>	REV. 20 JAN., 1992	<b>PART NO.</b>	02-014300
------------------	-------	---------------------------	--------------------	-----------------	-----------



## PARTS LIST

[illegible]

**TITLE**

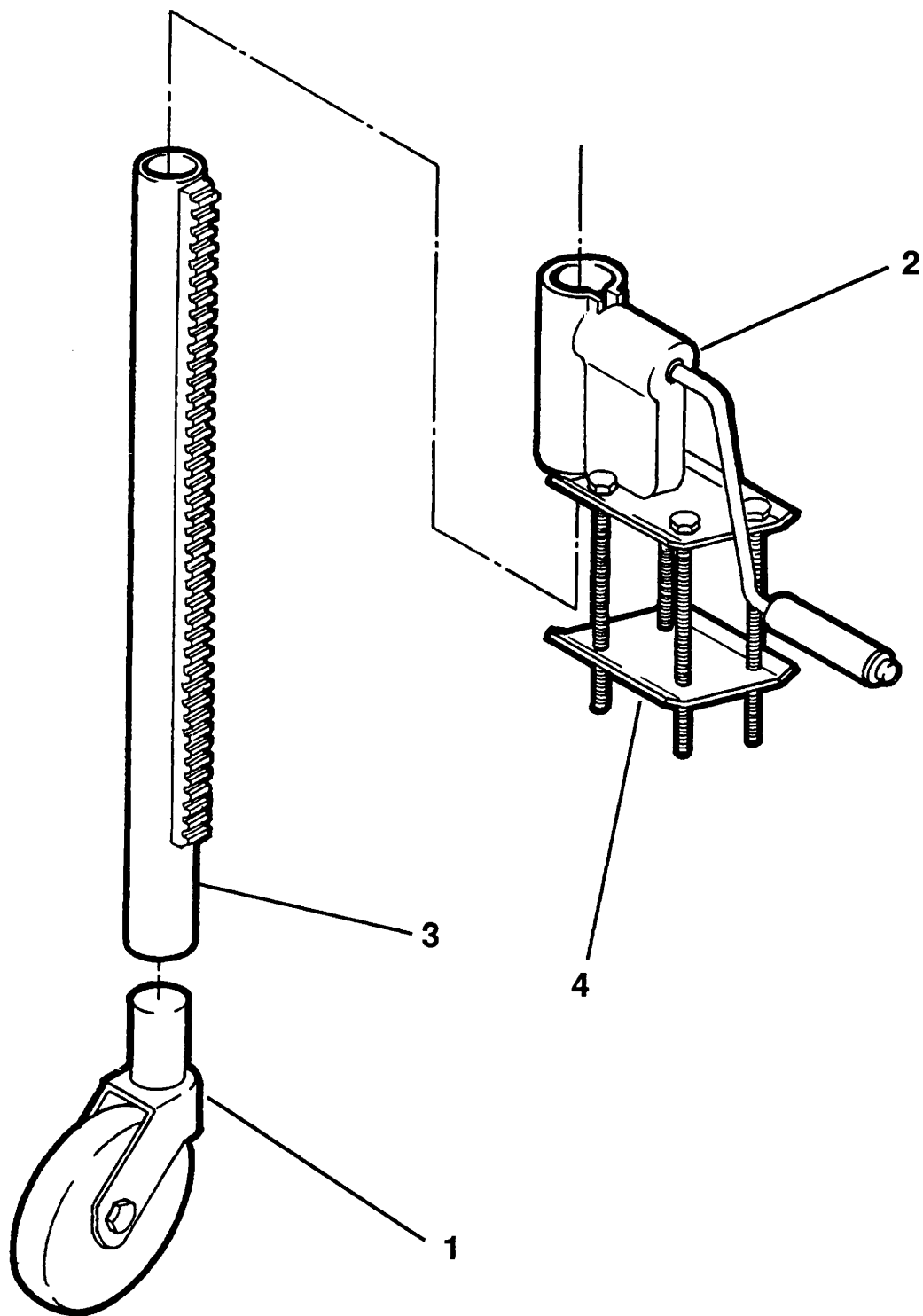
## TRAILER JACK

PLATE NO. 14.3

**SIMON AERIALS INC.**

REV. 12/01/89

**PART NO.** 08-057200



TITLE

TRAILER JACK

**SIMON AERIALS INC.**

REV. 12/01/89

PART  
NO.

08-057200

PLATE  
NO.

14.3

## PARTS LIST

[illegible]

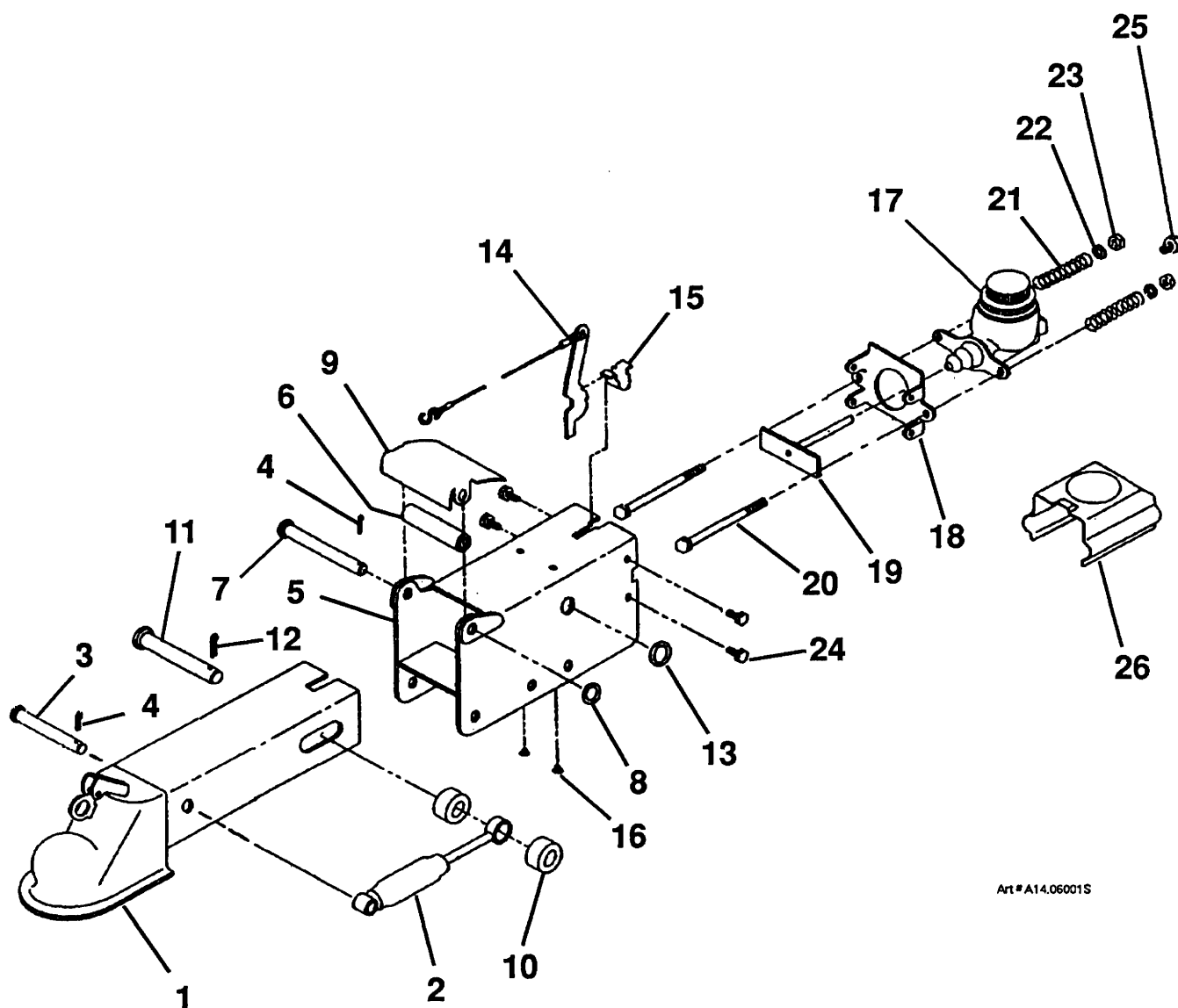
TITLE	TRAILER COUPLING [7,500 LB. (3,402 KG.) CAPACITY]
-------	---

PLATE NO. 14.06

## SIMON AERIALS INC.

NEW. 20 JAN., 1992

**PART NO.** 02-035900



Art # A14.06001S

TITLE TRAILER COUPLING [7,500 LB. (3,402 KG.) CAPACITY]

**SIMON AERIALS INC.**

NEW. 20 JAN., 1992

PART NO. 02-035900

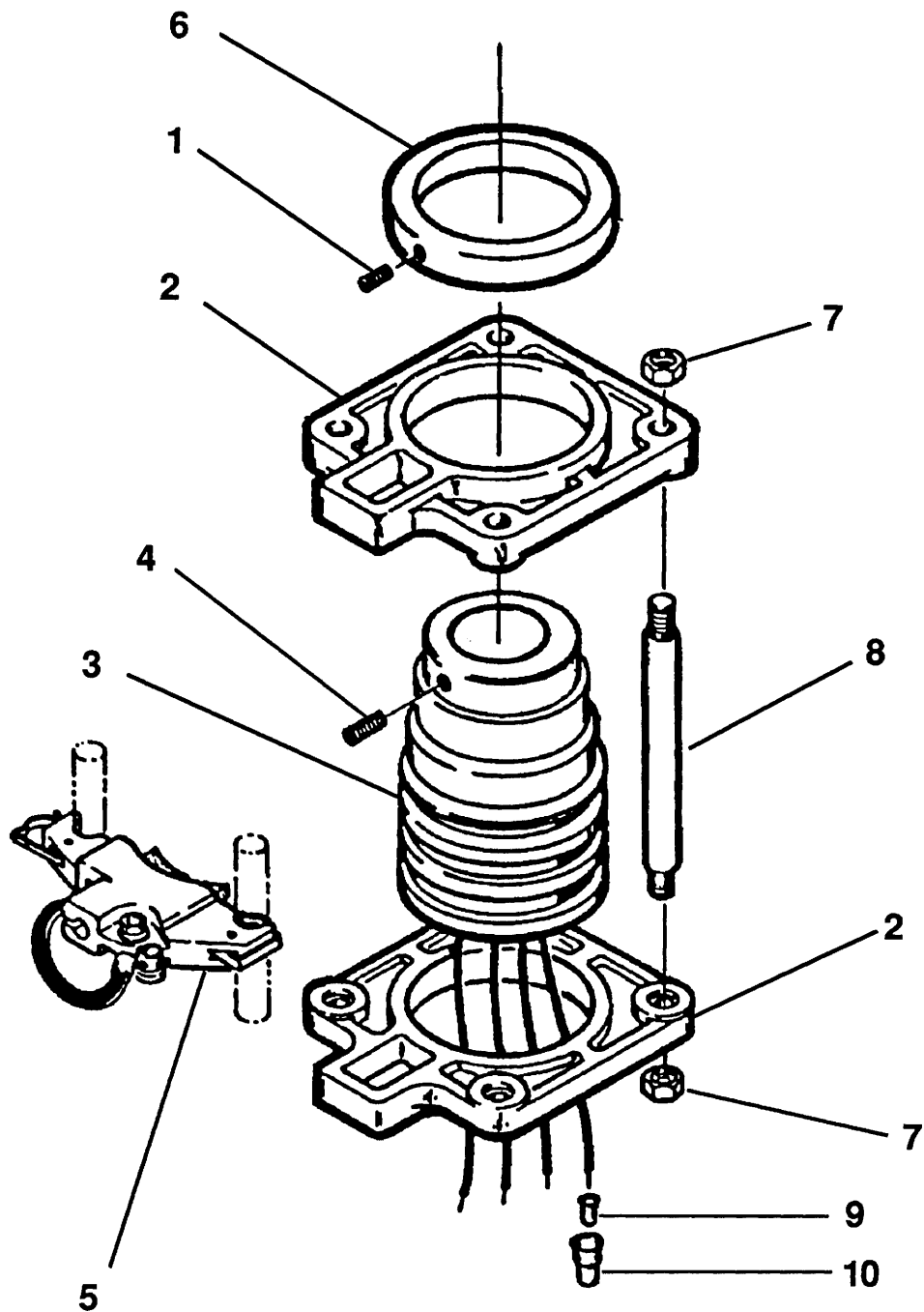
PLATE NO. 14.06



[illegible]

PLATE NO. 16.1	SIMON AERIALS INC.
----------------	--------------------

**PART NO. 03-415400**



TITLE

ELECTRICAL SWIVEL

**SIMON AERIALS INC.**

REV. 12/01/89

PART  
NO.

03-415400

PLATE  
NO.

16.1



# PARTS LIST

ITEM	PART NO	SEE SECTION	DESCRIPTION	QTY.
1	DKRZB55		DECAL KIT, RZB 55 (includes items 2 thru 14)	1
2	10-007200		DECAL, "DISENGAGE LOCK PIN . . ."	2
3	10-007600		DECAL, "120 V. A.C., 20 AMP"	1
4	10-019000		DECAL, "DANGER" (Electrocution Hazard) (small - 4")	1
5	10-084900		DECAL, "DANGER" (Electrocution Hazard) (large - 7")	2
6	2105890		DECAL, "DANGER" (Fully extend outriggers)	2
7	10-012200		DECAL, "CAUTION: For Hydraulic Fluid . . . DTE 15"	1
8	10-009300		DECAL, "CAUTION" (Use . . . on a firm, level surface)	1
9	10-013200		DECAL, "CAUTION" (Light indicates overheating . . .)	1
10	10-018900		DECAL, "BEWARE" (Potential Hazard)	1
11	2105930		DECAL, "OPERATING INSTRUCTIONS - GROUND"	1
12	2105920		DECAL, "OPERATING INSTRUCTIONS - PLATFORM"	1
13	10-083000		DECAL, "SIMON" NAME [4" (102 mm) high, Black]	1
14	10-069400		DECAL, MODEL "RZB 55" (Angled type style)	2
15	2108320		DECAL, "DANGER" (Improper use . . . will kill you! . . .)	2
16	2143860		DECAL, "WARNING" (Lower boom)	1
17	2144210		DECAL, "TIRE PRESSURE, 75 PSI"	2
18	10-015200		DECAL, "HYDRAULIC FLUID LEVEL CHECK"	1
19	10-024500		DECAL, "20 AMP CIRCUIT BREAKER"	1
20	10-016100		DECAL, "OUTRIGGERS CONTROL" (left front/ rear)	1
	10-016200		DECAL, "OUTRIGGERS CONTROL" (right front/ rear)	1
21	2108220		DECAL, GROUND CONTROL VALVES (includes electrical controls I.D. For electric models)	1
22	10-105600		DECAL, GROUND CONTROL VALVES (for use with separate electrical controls decal)	1
23	2143430		DECAL, GROUND ELECTRICAL BOX (gas models)	1
	2160280		DECAL, GROUND ELECTRICAL BOX (dual fuel models)	1
	10-105400		DECAL, GROUND ELECTRICAL BOX (electric models)	1
24	10-104300		DECAL, PLATFORM CONTROL VALVES	1
25			DECAL, PLATFORM ELECTRICAL CONTROLS (for gasoline or dual fuel powered models)	1
	2156990		(for electric powered models)	1
26	2142850		DECAL, "PLATFORM INDICATOR WILL LIGHT . . ."	1
27	10-025000		DECAL, PROPANE CLEAN OUT (dual fuel models only)	1
28	10-087800		DECAL, "GAS OUT - PROPANE IN" (dual fuel models only)	1
29	10-105900		DECAL, "SIMON" NAME [5" (127 mm) high, White]	2
	10-069300		DECAL, MODEL "RZB 50" (Angled type style)	2
30			DECAL, STRIPING (Bulk item, order as needed) [Black/ Orange/ Black, 3-1/2" (89 mm) wide, early models]	A.R.
31	10-069900		TAPE, SAFETY STRIPE (Yellow/ Black) [2" (51 mm) wide] x 36 Yard (33M) long roll]	1

TITLE

DECALS, RZB 50 OR RZB 55

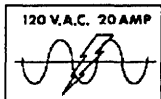
PLATE  
NO.

99.07

**SIMON AERIALS INC.**

REV. 02 MAR., 1992

PART  
NO.



3

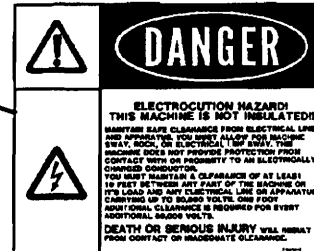
DISENGAGE LOCKPIN BEFORE  
USING THE TURNTABLE

2

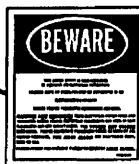
4



5



10



20 AMP. CIRCUIT BREAKER

19

- OPERATING INSTRUCTIONS - PLATFORM**
- TURN POWER KEYSWITCH ON.
  - DEPRESS AND HOLD FOOT PEDAL TO ENERGIZE MOTOR PROVIDING HYDRAULIC POWER.
  - SLOWLY OPERATE DESIRED FUNCTION LEVER IN DESIRED DIRECTION.
  - SLOWLY RETURN FUNCTION LEVER TO CENTRAL POSITION, THEN RELEASE FOOT PEDAL.
  - OPERATE ONLY ONE FUNCTION AT A TIME.
  - BOOM LOWER FUNCTIONS REQUIRE ONLY MOMENTARY USE OF FOOT PEDAL TO START OPERATION.

SSD-2105920

12

13, 29

# SIMON

## RZB 55

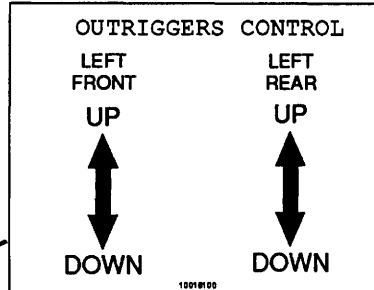
14

20

- OPERATING INSTRUCTIONS - GROUND**
- TURN POWER KEYSWITCH ON.
  - PRESS AND HOLD BUTTON TO ENERGIZE MOTOR PROVIDING HYDRAULIC POWER.
  - SLOWLY OPERATE DESIRED FUNCTION LEVER IN DESIRED DIRECTION.
  - SLOWLY RETURN FUNCTION LEVER TO CENTRAL POSITION, THEN RELEASE BUTTON.
  - OPERATE ONLY ONE FUNCTION AT A TIME.
  - BOOM LOWER FUNCTIONS REQUIRE ONLY MOMENTARY USE OF BUTTON TO START OPERATION.

SSD-2105930

11



1001810

### HYDRAULIC FLUID LEVEL CHECK

WITH MACHINE ON A FLAT LEVEL SURFACE, FLUID LEVEL SHOULD BE ABOVE HIGH LINE MARKED ON THE SIGHT GLASS.

10-18200

7

18

### CAUTION

FOR HYDRAULIC FLUID USE ONLY CLEAN FRESH MOBIL DTE 15 HYDRAULIC OIL: FILTER ALL OIL BEFORE ADDING

### CAUTION

LIGHT INDICATES OVER-HEATED ENGINE AND/OR BROKEN VEE-BELT AT OIL PUMP.

9



DANGER

THE IMPROPER USE OF THIS MACHINE WILL KILL YOU! ONLY QUALIFIED PERSONNEL ARE AUTHORIZED TO OPERATE THIS MACHINE. BE CAREFUL --- STAY ALIVE!

DO NOT OPERATE MACHINE FROM GROUND WITH PERSONNEL IN PLATFORM, EXCEPT IN EMERGENCY.

AN AUXILLIARY HAND PUMP IS PROVIDED, THE HAND PUMP LEVER IS LOCATED UNDER THIS CONSOLE.

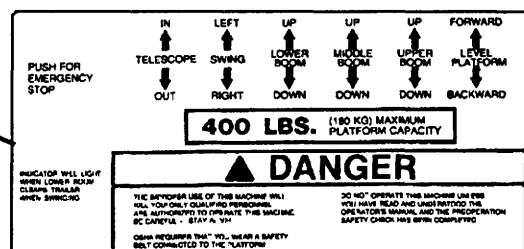
2106320

15

### TIRE PRESSURE, 75 PSI

17

24



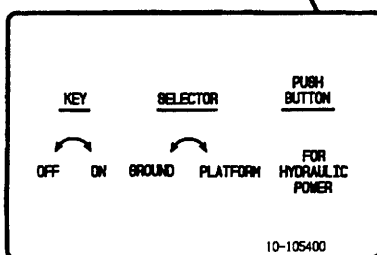
23

22

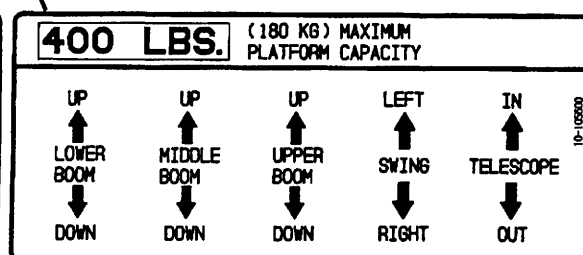
26

PLATFORM INDICATOR WILL LIGHT WHEN LOWER BOOM CLEARS TRAILER WHEN SWINGING

2142820



10-105400



10-105600

TITLE

DECALS, RZB 50 OR RZB 55

SIMON AERIALS INC.

REV. 02 MAR., 1992

PART NO.

PLATE NO.

99.07